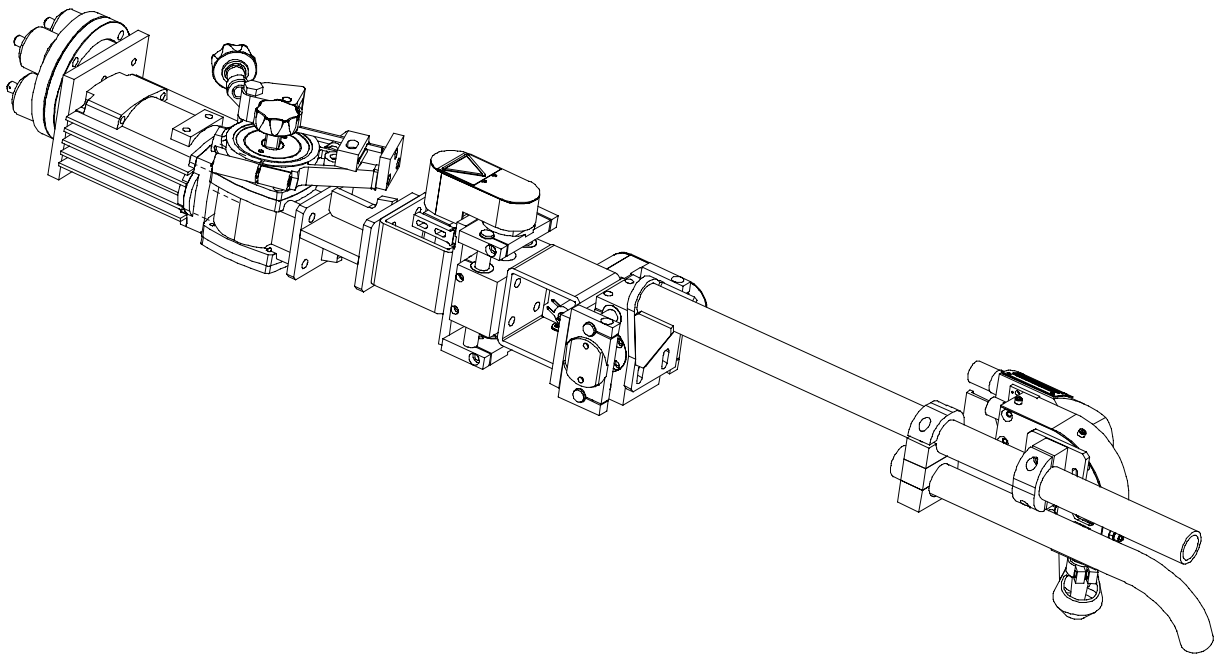




A6S Compact 300



**Bruksanvisning
Brugsanvisning
Bruksanvisning
Käyttöohjeet
Instruction manual
Betriebsanweisung**

**Manuel d'instructions
Gebruiksaanwijzing
Instrucciones de uso
Istruzioni per l'uso
Manual de instruções
Οδηγίες χρήσεως**

SVENSKA	5
DANSK	19
NORSK	33
SUOMI	47
ENGLISH	61
DEUTSCH	75
FRANÇAIS	89
NEDERLANDS	103
ESPAÑOL	117
ITALIANO	131
PORTUGUÊS	145
ΕΛΛΗΝΙΚΑ	159

Rätt till ändring av specifikationer utan avisering förbehålles.
 Ret til ændring af specifikationer uden varsel forbeholdes.
 Rett til å endre spesifikasjoner uten varsel forbeholdes.
 Oikeudet muutoksiin pidätetään.
 Rights reserved to alter specifications without notice.
 Änderungen vorbehalten.
 Sous réserve de modifications sans avis préalable.
 Recht op wijzigingen zonder voorafgaande mededeling voorbehouden.
 Reservado el derecho de cambiar las especificaciones sin previo aviso.
 Ci riserviamo il diritto di variare le specifiche senza preavviso.
 Reservamo-nos o direito de alterar as especificações sem aviso prévio.
 Διατηρείται το δικαίωμα τροποποίησης προδιαγραφών Χωρίς προειδοποίηση.

FÖRSÄKRAN OM ÖVERENSSTÄMMELSE

ESAB AB, Welding Automation, SE-695 81 Laxå, Sverige, försäkrar under eget ansvar att svets huvud **A6 Compact 300** från serienummer **440** är i överensstämmelse med standard IEC/EN 60292 och IEC/EN 60204 enligt villkoren i direktiv (98/37/EG) och standard EN 50199 enligt villkoren i direktiv (89/336/EEG) med tillägg (93/68/EEG).

OVERENSSTEMMELSEERKLÆRING

ESAB AB, Welding Automation, SE-695 81 Laxå, Sverige, erklærer på eget ansvar, at svejsehoved **A6 Compact 300** fra serienummer **440** er i overensstemmelse med standarden IEC/EN 60292 og IEC/EN 60204 ifølge betingelserne i direktiv (98/37/EØF) og standarden EN 50199 ifølge betingelserne i direktiv (89/336/EØF) med tillæg (93/68/EØF).

FORSIKRING OM SAMSVAR

Esab Welding Equipment AB, SE-695 81 Laxå, Sverige, försäkrar på eget ansvar att sveisehode **A6 Compact 300** fra serienummer **440** er i overensstemmelse med standard EN 60292 og EN 60204 i følge vilkårene i direktiv (98/37/EF) og standard EN 50199 i følge vilkårene i direktiv (89/336/EF) med tillegg (93/68/EF).

VAATIMUSTENMUKAISUUSVAKUUTUS

ESAB AB, Welding Automation, SE-695 81 Laxå, Ruotsi, vakuuttaa omalla vastuullaan, että hitsauspään **A6 Compact 300** alkaen sarjanumerosta **440** täyttää standardin IEC/EN 60292 ja IEC/EN 60204 vaatimukset direktiivin (98/37/ETY) ehtojen mukaisesti sekä standardin EN 50199 vaatimukset direktiivin (89/336/ETY) ja sen lisäysten (93/68/ETY) ehtojen mukaisesti.

DECLARATION OF CONFORMITY

ESAB AB, Welding Automation, SE-695 81 Laxå, Sweden, gives its unreserved guarantee that welding head **A6 Compact 300** from serial number **440** complies with standard IEC/EN 60292 and IEC/EN 60204, in accordance with the requirements of directive (98/37/EEC) and with standard EN 50199, in accordance with the requirements of directive (89/336/EEC) and addendum (93/68/EEC).

ZULASSUNGSNACHWEIS

ESAB AB, Welding Automation, SE-695 81 Laxå Schweden, bestätigt hiermit in Eigenverantwortung, daß der Schweißkopf **A6 Compact 300** ab Seriennummer **440** dem Standard IEC/EN 60292 und IEC/EN 60204 gemäß den Bedingungen der Direktive (98/37/EEG) und dem Standard EN 50199 gemäß den Bedingungen der Direktive (89/336/EEG) mit Zusatz (93/68/EEG) entspricht.

CERTIFICAT DE CONFORMITÉ

ESAB AB, Welding Automation, SE-695 81 Laxå, Suède, certifie que la tête de soudage **A6 Compact 300** à partir du numéro de série **440** est conforme à la norme IEC/EN 60292 et IEC/EN 60204 selon les conditions de la directive (98/37/CEE) et à la norme EN 50199 selon les conditions de la directive (89/336/CEE) avec additif (93/68/CEE).

VERKLARING VAN OVEREENSTEMMING

ESAB AB, Welding Automation, SE-695 81 Laxå Zweden, verklaart geheel onder eigen verantwoordelijkheid dat lastoorts **A6 Compact 300** van het serienummer **440** in overeenstemming is met norm IEC/EN 60292 en IEC/EN 60204 conform de bepalingen in richtlijn (98/37/EEG) en met norm EN 50199 conform de bepalingen in richtlijn (89/336/EEG) met annex (93/68/EEG).

DECLARACIÓN DE CONFORMIDAD

ESAB AB, Welding Automation, SE-695 81 Laxå, Suecia, garantiza bajo propia responsabilidad que el cabezal de soldeo **A6 Compact 300** a partir del número de serie **440** concuerda con la norma IEC/EN 60292 y IEC/EN 60204 conforme a la directiva (98/37/CEE) y con la norma EN 50199 según los requisitos de la directiva (89/336/CEE) con el suplemento (93/68/CEE).

DICHIARAZIONE DI CONFORMITA

ESAB AB, Welding Automation, SE-695 81 Laxå Svezia, dichiara sotto la propria responsabilità che la testa saldatrice **A6 Compact 300** con numero di serie a partire da **440** è conforme alla norma IEC/EN 60292 e IEC/EN 60204 come previsto dalla direttiva (98/37/CEE) ed alla norma EN 50199 come previsto dalla direttiva (89/336/CEE) e successive integrazioni (93/68/CEE).

DECLARAÇÃO DE CONFORMIDADE

ESAB AB, Welding Automation, SE-695 81 Laxå Suécia, garante sob responsabilidade própria que a cabeça de soldadura **A6 Compact 300** a partir do número de série **440** está em conformidade com a norma IEC/EN 60292 e IEC/EN 60204 segundo os requisitos da directiva (98/37/CEE) e com a norma EN 50199 segundo os requisitos da directiva (89/336/CEE) com o suplemento (93/68/CEE).

ΔΗΛΩΣΗ ΣΥΜΜΟΡΦΩΣΗΣ

Η εταιρεία ESAB AB, Welding Automation, SE-695 81 Laxå, Σουηδία, δηλώνει ότι τα μηχανήματα κεφαλής ηλεκτροσυγκόλλησης **A6 Compact 300** από τον αριθμό σειράς **440** και έπειτα, συμμορφώνονται με το πρότυπο IEC/EN 60292 και IEC/EN 60204 σύμφωνα με τις απαιτήσεις της οδηγίας (98/37/EEG) και το πρότυπο EN 50199 σύμφωνα με τις απαιτήσεις της οδηγίας (89/336/EEG) και του παραρτήματος (93/68/EEG).

Laxå 2004-10-21



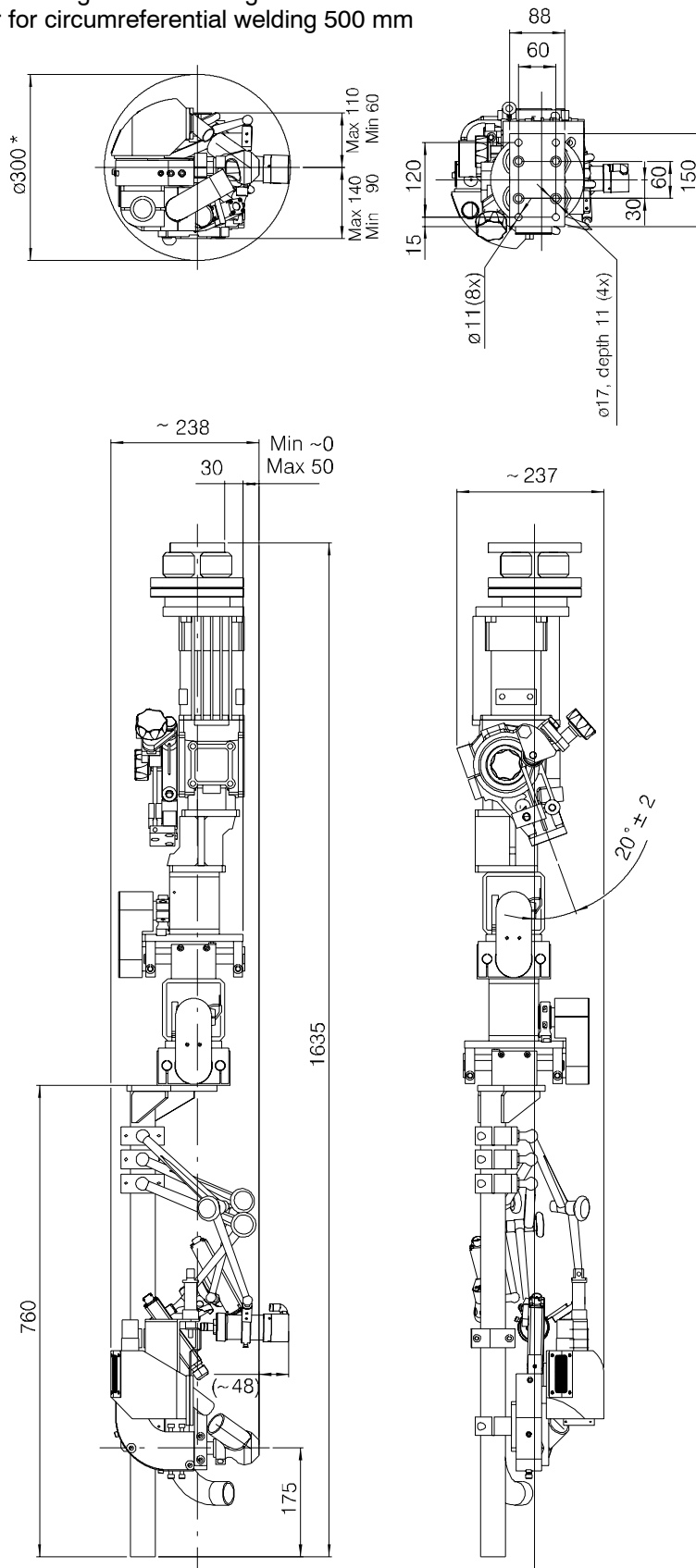
Henry Selenius
Managing Director
ESAB AB, Welding Automation
SE-695 81 LAXÅ
SWEDEN

Tel: + 46 584 81000

Fax: + 46 584 411721

**Måttskiss Målskitse Målskisse Mittapiirustus Dimension drawing Mass-
 bild Cotes d'encombrement Maatschets Croquis acotado Dimensioni
 Esboço com dimensões Σχεδιάγραμμα μεγεθών**

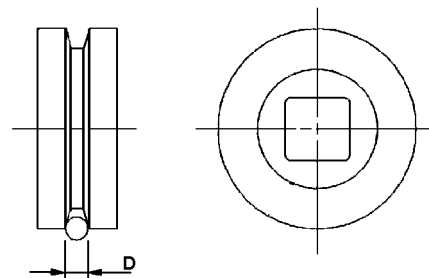
* Welding head complete with camera, laser lamp and inductive joint tracking system.
 Minimum diameter for longitudinal welding 300 mm
 Minimum diameter for circumferential welding 500 mm



Slitdelar Sliddele Slitedeler Kulutusosat Wear components Verschleis-
 steile Pièces d'usure Slijtageonderdelen Piezas de desgaste Parti di usu-
 ra Peças expostas a desgaste Αναλώσιμα ανταλλακτικά

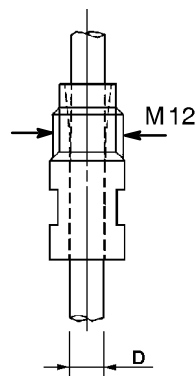
Feed rollers

SAW and MIG/MAG	
Part no	D (mm)
0218 510 286	4,0
0218 510 298	3,0 - 3,2



Contact tip

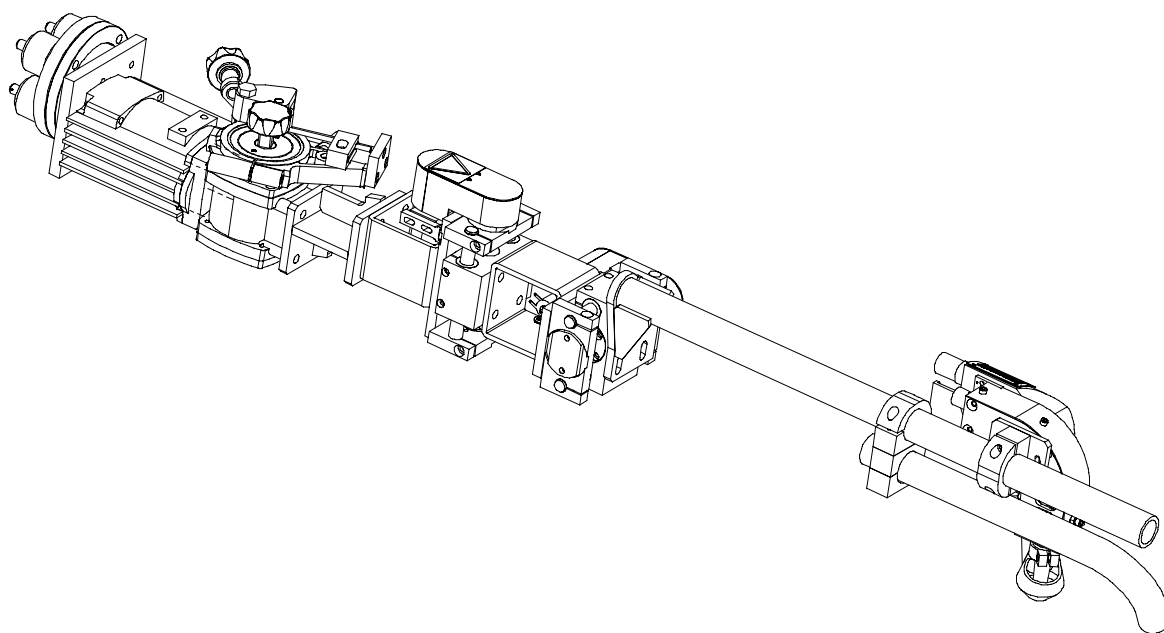
SAW LD (D20)	
Part no	D (mm)
0154 623 003	4,0
0154 623 004	3,2
0154 623 005	3,0



Reservdelsförteckning Reservdelsfortegnelse Reservedelsliste
Varaosaluettelo Spare parts list Ersatzteilliste Liste de pièces détachées
Reserveonderdelenlijst Lista de repuestos Elenco ricambi Lista de peças
sobressalentes Πίνακας ανταλλακτικών μερών

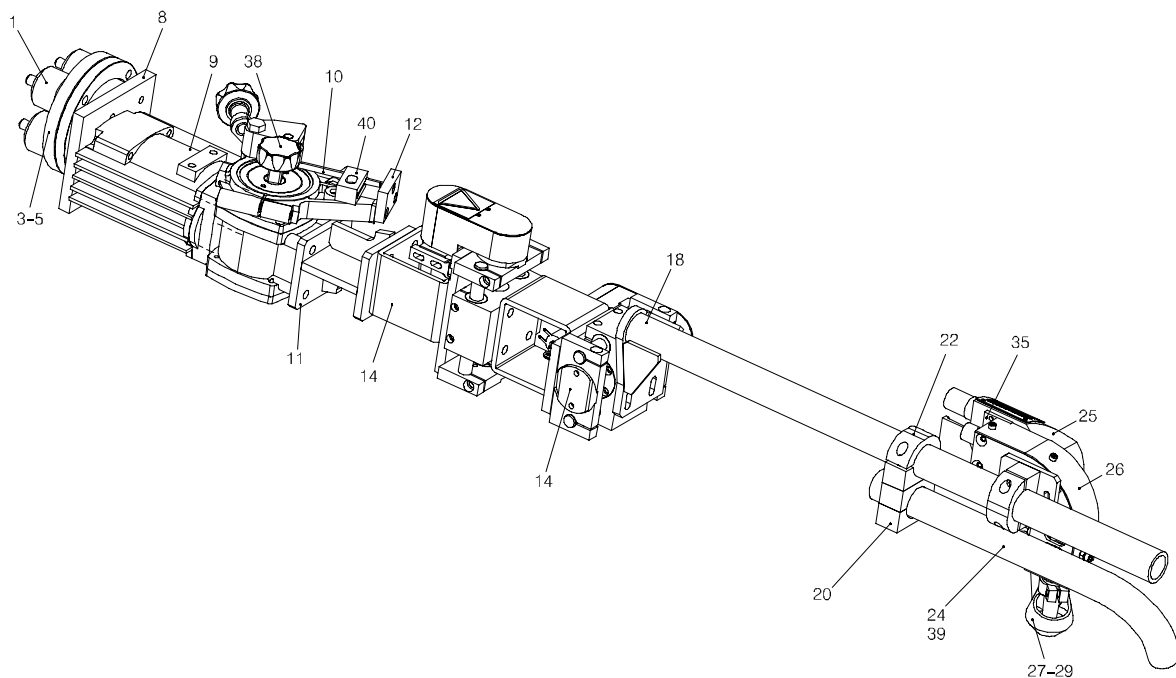
A6S Compact 300

Edition 2006-07-13

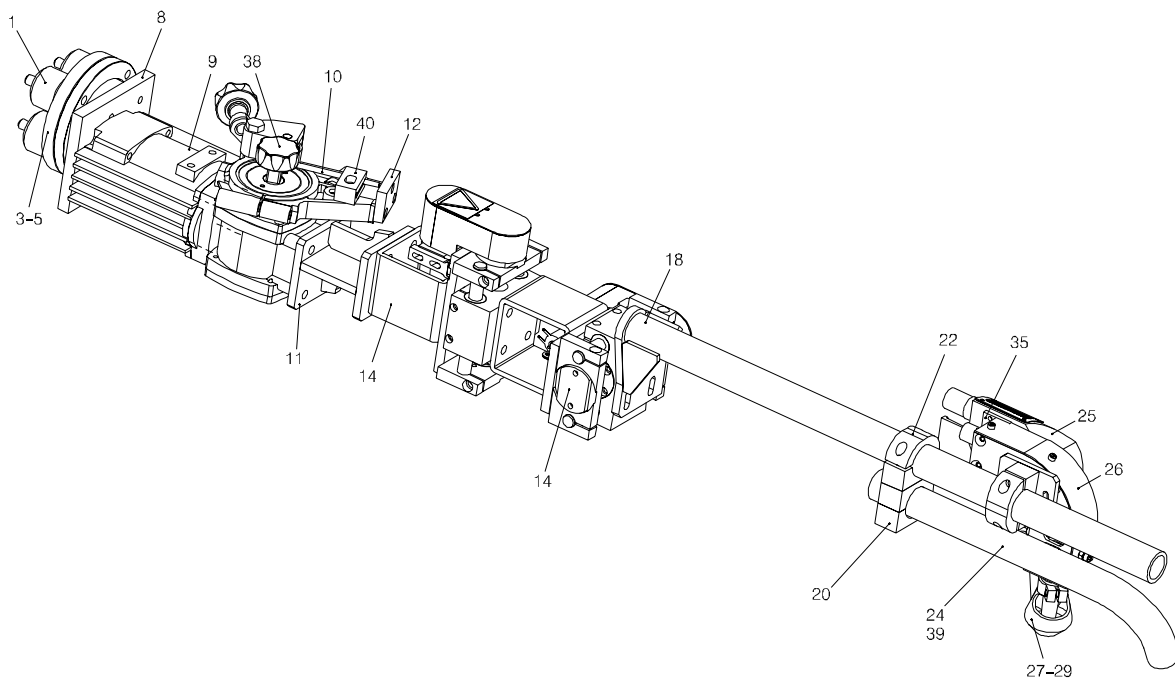


Ordering no.	Denomination	Notes
0809280880	Welding head	A6S Compact 300
0809280881	Welding head	A6S Compact 300

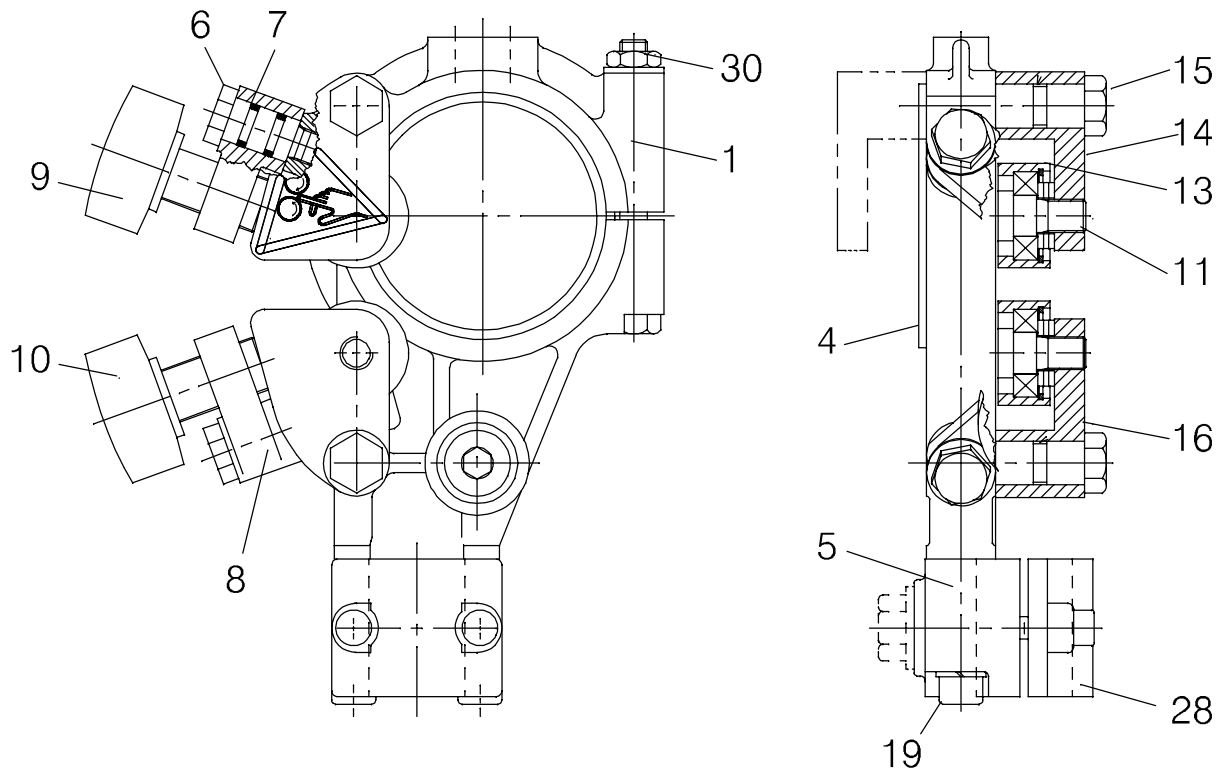
Item no.	Qty	Ordering no.	Denomination	Notes
		0809280880	Welding head	A6S Compact 300
1	4	0278300180	Insulator	2000 V
3	1	0334171001	Plate	
4	1	0334170001	Clamping ring	
5	1	0334172001	Gear bracket	
8	1	0810252001	Bracket	
9	1	0145063896	Motor with gear	A6 VEC (156:1), see separate manual
10	1	0147639881	Straightener (left mounted)	D35
11	1	0808974880	Spacer for inner head	
12	1	0415839001	Wire liner attachment	
14	2	0809273880	Slide	stroke 50 mm
18	1	0808973881	Arm for compact head	
20	1	0191499102	Clip and cover plate	
22	1	0810255003	Bracket	
24	1	0809791880	Flux suction tube	
25	1	0809333880	Flux hopper complete	
26	1	0809289880	Wire guider	90 degrees
27	1	0145221881	Flux funnel	D20
28	1	0413510005	Contact tube	d20,l=87
29		0443383001	Flux hose	d32/25
32	2	0154363001	Sleeve	
33	1	0154377001	Wire feed conduit	
34	2	0154375001	Nipple	
35	1	0809279001	Insulating plate	
38	1	0218810183	Insulated hand wheel	
39		0395986006	Hose	d56/38
40	1	0334278880	Guide tube insert	



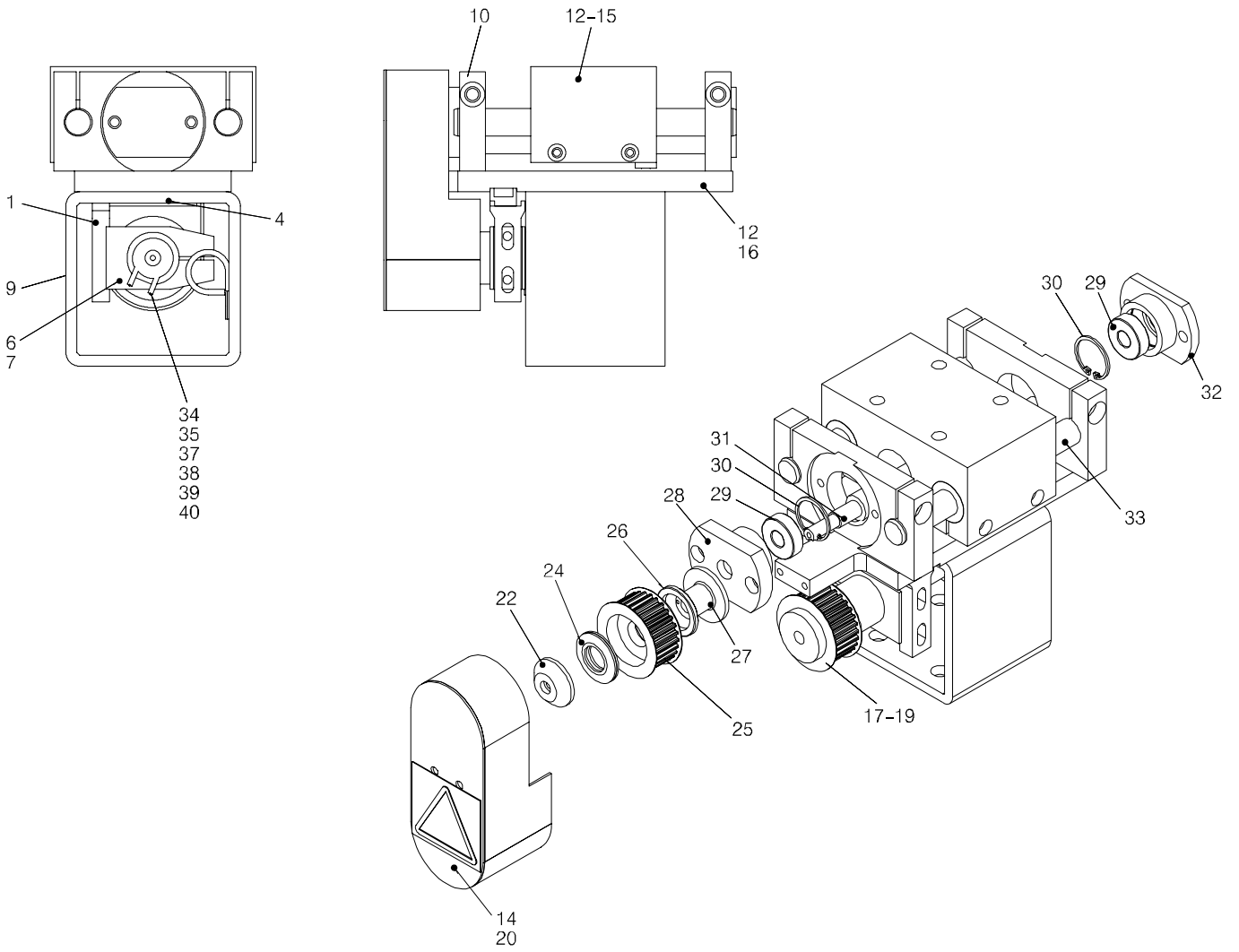
Item no.	Qty	Ordering no.	Denomination	Notes
		0809280881	Welding head	A6S Compact 300
1	4	0278300180	Insulator	2000 V
3	1	0334171001	Plate	
4	1	0334170001	Clamping ring	
5	1	0334172001	Gear bracket	
8	1	0810252001	Bracket	
9	1	0145063897	Motor with gear	A6 VEC (74:1), see separate manual
10	1	0147639881	Straightener (left mounted)	D35
11	1	0808974880	Spacer for inner head	
12	1	0415839001	Wire liner attachment	
14	2	0809273880	Slide	stroke 50 mm
18	1	0808973881	Arm for compact head	
20	1	0191499102	Clip and cover plate	
22	1	0810255003	Bracket	
24	1	0809791880	Flux suction tube	
25	1	0809333880	Flux hopper complete	
26	1	0809289880	Wire guider	90 degrees
27	1	0145221881	Flux funnel	D20
28	1	0413510005	Contact tube	d20,l=87
29		0443383001	Flux hose	d32/25
32	2	0154363001	Sleeve	
33	1	0154377001	Wire feed conduit	
34	2	0154375001	Nipple	
35	1	0809279001	Insulating plate	
38	1	0218810183	Insulated hand wheel	
39		0395986006	Hose	d56/38
40	1	0334278880	Guide tube insert	



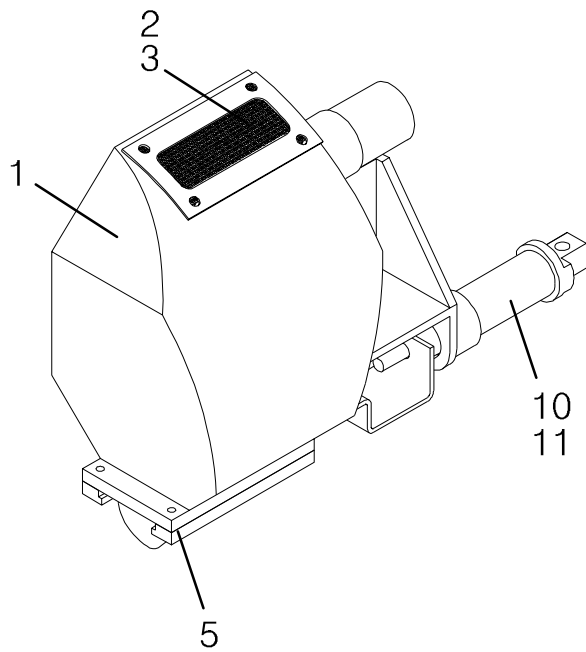
Item	Qty	Orderingno.	Denomination	Remarks
		0147 639 881	Straightener (left mounted)	
1	1	0156 449 001	Clamp	
4	1	0215 503 601	Insulating sleeve	
5	1	0156 530 001	Clamp half	
6	2	0212 900 001	Spacer screw	
7	4	0215 201 209	O-ring	D11.3x2.4
8	2	0218 400 801	Pressure roller arm	
9	1	0218 810 181	Handwheel	
10	1	0218 810 182	Handwheel	
11	3	0332 408 001	Stub shaft	
13	3	0153 148 880	Roller	
14	1	0415 498 001	Thrust roller carrier	
15	2	0212 902 601	Spacer screw	
16	1	0415 499 001	Thrust roller carrier	
19	2	0219 501 013	Spring washer	D18.1/10.2
28	1	0156 531 001	Clamp half	
30	1	0212 601 110	Nut	M10



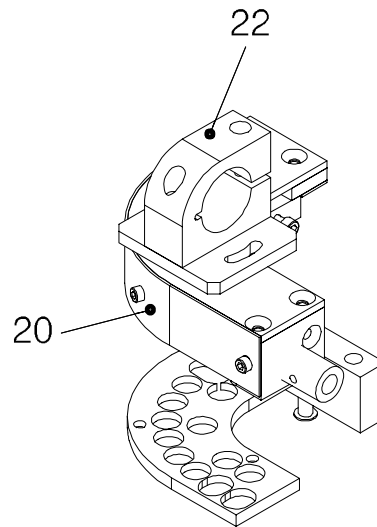
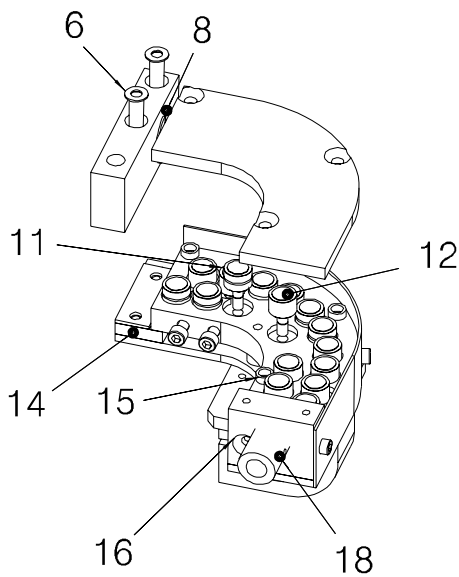
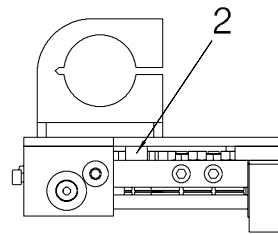
Item no.	Qty	Ordering no.	Denomination	Notes
		0809273880	Slide stroke 50 mm	
1	1	0809268001	Motor bracket	
4	1	0809267001	Motor bracket	
6	1	0809266001	Motor holder	
7	1	0809275880	Motor with gear	2342-24cr 24v 8100
9	1	0809272001	Spacing tube	
10	2	0808980001	Cross member	
12	1	0808979001	Runner	
14	4	0809274001	Ball bushing	
15	1	0809271001	Ball screw drive nut	
16	1	0809265001	Base plate	
17	1	0808985001	Cog belt wheel	z=28
18	1	0212204301	Stop screw	m6x12
19	1	0334342005	Cog belt	
20	1	0809350880	Belt guard compl.	
22	1	0334330880	Compression washer compl.	
24	2	0219504411	Cup spring-valve	
25	1	0334328005	Cog belt wheel	z=28
26	1	0334327001	Friction ring	
27	1	0449077001	Friction pin	tandem mig
28	1	0808986001	Bearing housing front	
29	2	0190726000	Roller bearing	6000-2rs
30	2	0215701114	Retaining ring	d=26
31	1	0808988001	Drive shaft	
32	1	0808987001	Bearing housing rear	
33	2	0809269001	Slide axle	
34	1	0192784001	Pin plug	2-pole
35	2	0192784102	Cap	
37		0190304117	Hose	d 24x1,3
38		0190304116	Hose	d 19x1,3
39		0190304105	Hose	d 13x0.35
40		0262613401	Cable	2x1.5 mm2



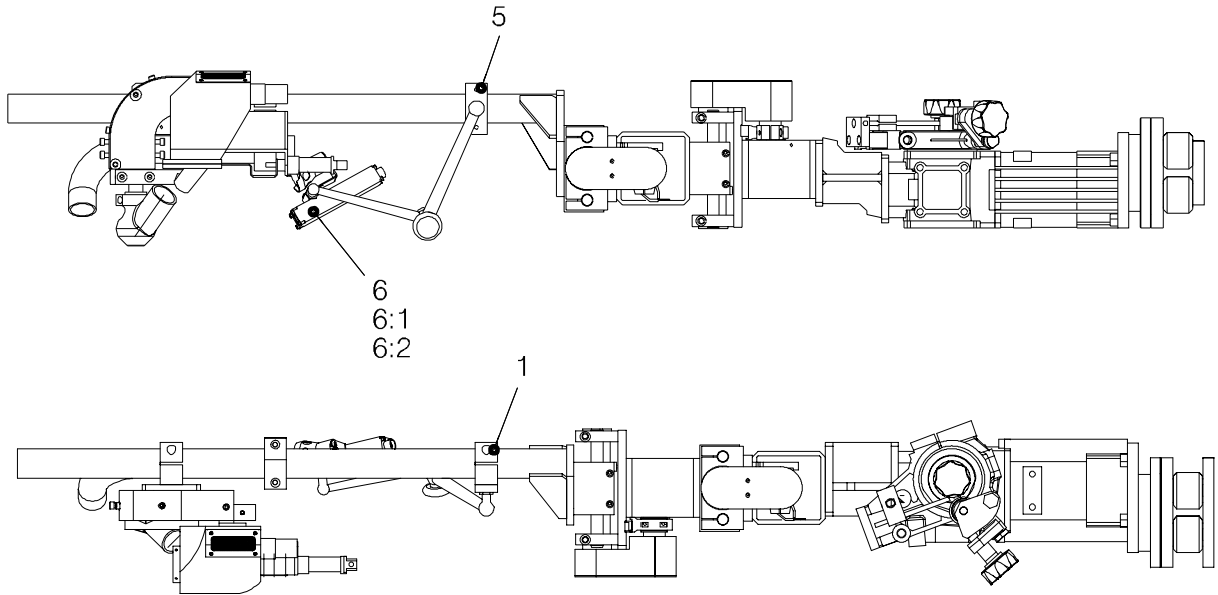
Item no.	Qty	Ordering no.	Denomination	Notes
		0809333880	Flux hopper complete	
1	1	0809332001	Flux hopper	
2	1	0809338001	Net filter	
3	1	0809337001	Filter holder	
5	1	0809336880	Slide flange with pipe	
10	1	0413937001	Cylinder	
11	2	0367675001	Nippel	



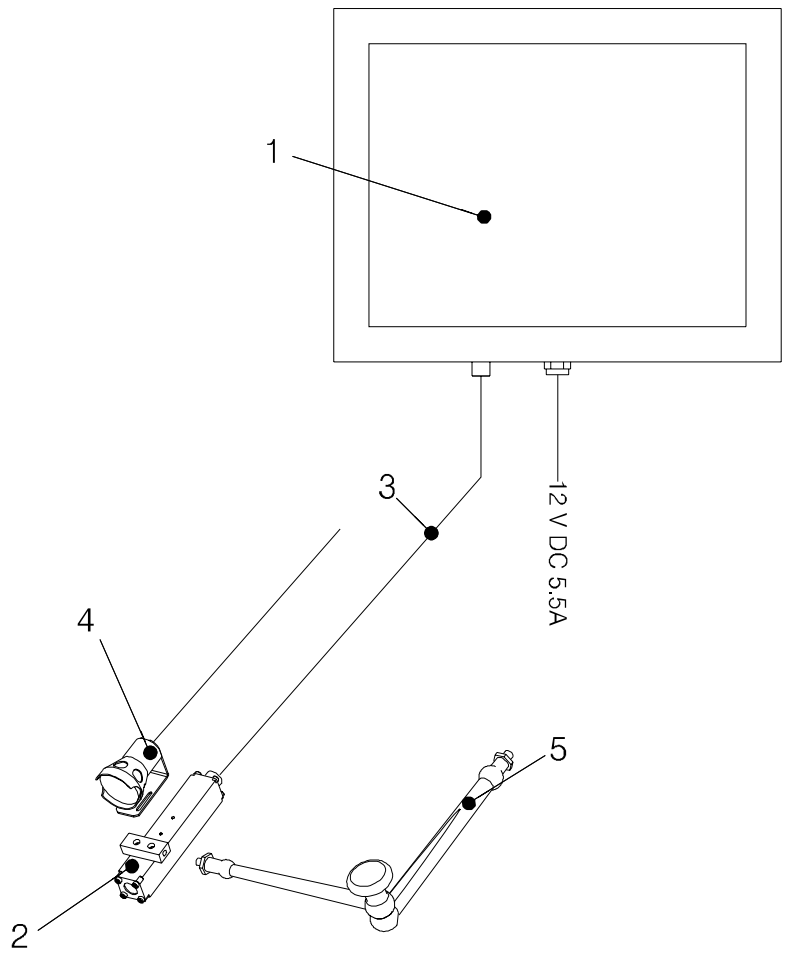
Item no.	Qty	Ordering no.	Denomination	Notes
		0809289880	Wire guider 90 degrees	
2	3	0191418089	Spacer sleeve	L=8
6	2	0809328001	Bushing	
8	1	0809283001	Bar	
11	7	0809330001	Roller bearing with groove	
12	9	0809329001	Roller bearing	
14	1	0809282001	Bar	
15	3	0809288001	Spacing tube	
16	1	0809325001	Bracket	
18	1	0810282001	Wire lead attachment	
20	1	0809331001	Guard plate	
22	1	0810255002	Bracket	



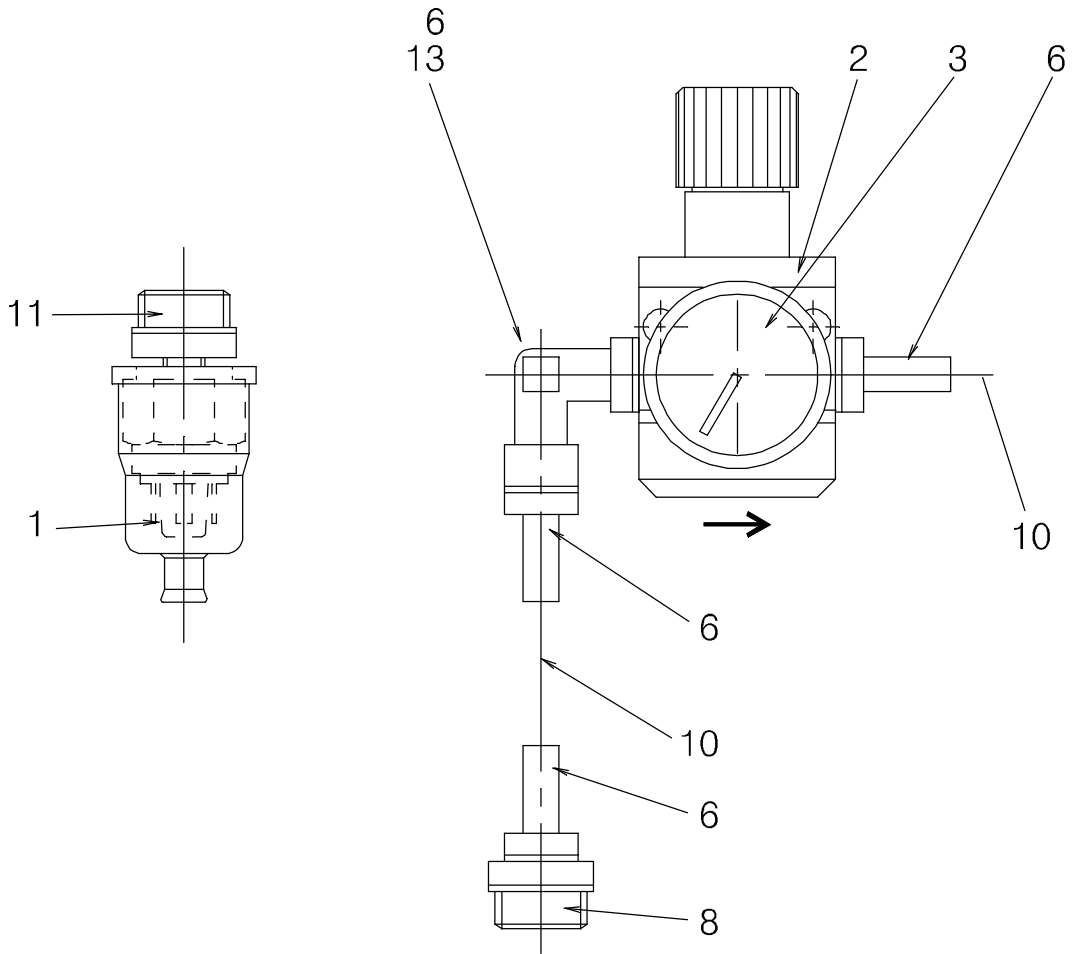
Item no.	Qty	Ordering no.	Denomination	Notes
		0811176880	TV monitoring equipment	Option 10
1	1	0810255001	Bracket	
5	1	0811175001	Mounting plate	
6	1	0811413880	Camera equipment with pressure guard	
6:1	1	0811411880	Submerged arc welding Camera	SAW C2
6:2	1	0453248880	Cooling air unit	



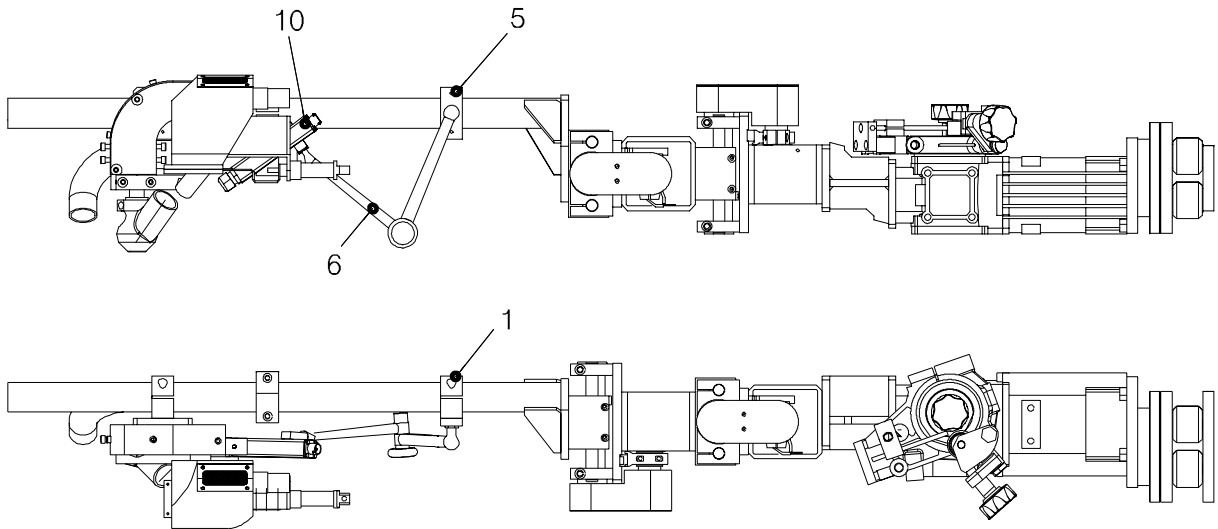
Item no.	Qty	Ordering no.	Denomination	Notes
		0811411880	Submerged arc welding Camera, complete	SAW C2
1	1	0811383880	Screen-unit	cpl. p1
2	1	0810517881	Submerged arc welding Camera (with cooling)	
3	1	0811179003	Camera/ screen cable	l=30m
4	1	0802713880	Halogen lighting	
5	1	0810093880	Flexible arm	



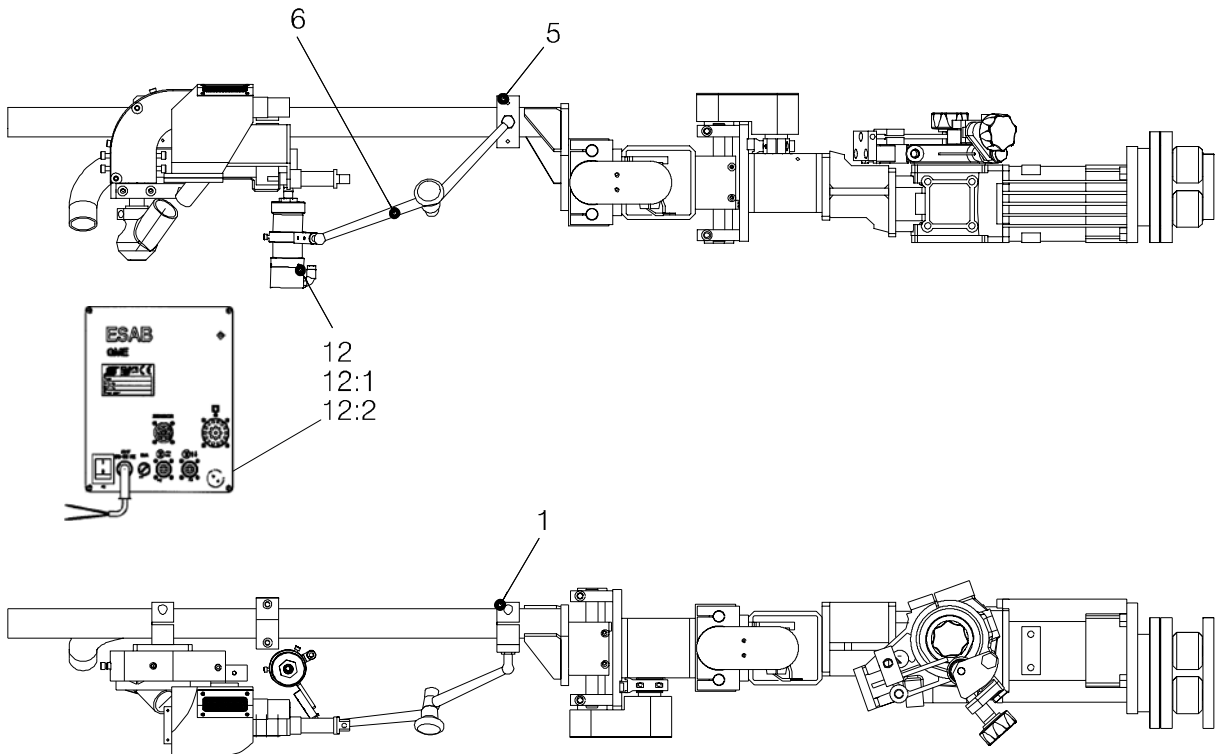
Item no.	Qty	Ordering no.	Denomination	Notes
		0453248880	Cooling air unit	
1	1	0451306001	Pressure switch	0.5/10 bar
2	1	0416898001	Pressure gauge	1/8"
3	1	0417163001	Regulator	c 1104-r00
6	3	0417797009	Hose nipple	d7-1/4"
8	1	0417851002	Bushing	r1/2"r1/4"
10	3	0190343102	Hose	d 12,7/6,3
11	1	0417851004	Bushing	1/2"-1/8"
12	2	0394791061	Double nipple	r1/2-r1/4"
13	1	0416897003	Angular pipe	1/4"



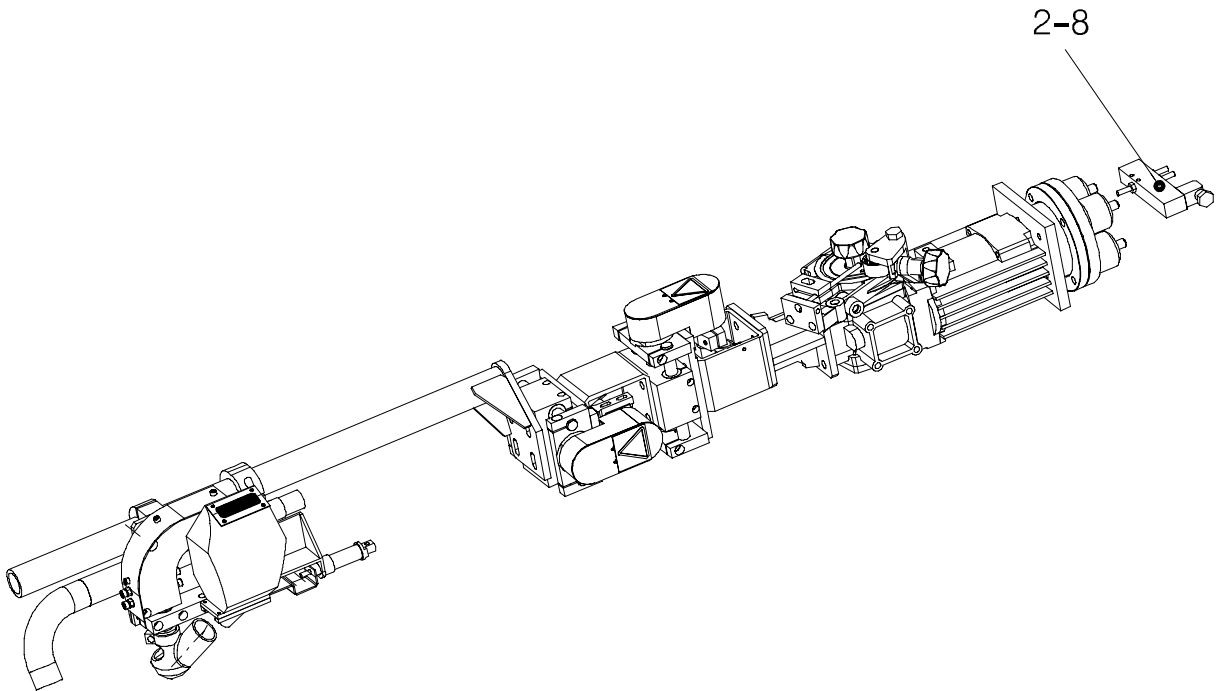
Item no.	Qty	Ordering no.	Denomination	Notes
		0811177880	Laser lamp complete	Option 20
1	1	0810255001	Bracket	
5	1	0811175001	Mounting plate	
6	1	0810093881	Flexible arm and attachment	
10	1	0811174001	Laser lamp point	llp-100



Item no.	Qty	Ordering no.	Denomination	Notes
		0811178880	Inductive joint tracking	Option 30
1	1	0810255001	Bracket	
5	1	0811175001	Mounting plate	
6	1	0810093881	Flexible arm and attachment	
12	1	0811052880	Inductive joint tracking	1 axis
12:1	1	0810876880	El. inductive joint tracking	
12:2	1	0810860880	Inductive gauge	



Item no.	Qty	Ordering no.	Denomination	Notes
		0813620880	Pneumatic flux valve	Option 40
2	1	0417859004	Magnetic valve	5/2-way
3	3	0417797008	Hose nipple	D7-1/8"
4	3	0417792004	Nylon washer	1/8"
5	5	0190315104	Hose	D12.5/6.4
6	2	0192238341	Allen screw	steel 8.8 M5x50
7	2	0215100011	Washer	BRB Steel 10/5.3x1
8	2	0417873001	Throttle valve with silencer	



ESAB subsidiaries and representative offices

Europe

AUSTRIA

ESAB Ges.m.b.H
Vienna-Liesing
Tel: +43 1 888 25 11
Fax: +43 1 888 25 11 85

BELGIUM

S.A. ESAB N.V.
Brussels
Tel: +32 2 745 11 00
Fax: +32 2 726 80 05

THE CZECH REPUBLIC

ESAB VAMBERK s.r.o.
Prague
Tel: +420 2 819 40 885
Fax: +420 2 819 40 120

DENMARK

Aktieselskabet ESAB
Copenhagen-Valby
Tel: +45 36 30 01 11
Fax: +45 36 30 40 03

FINLAND

ESAB Oy
Helsinki
Tel: +358 9 547 761
Fax: +358 9 547 77 71

FRANCE

ESAB France S.A.
Cergy Pontoise
Tel: +33 1 30 75 55 00
Fax: +33 1 30 75 55 24

GERMANY

ESAB GmbH
Solingen
Tel: +49 212 298 0
Fax: +49 212 298 204

GREAT BRITAIN

ESAB Group (UK) Ltd
Waltham Cross
Tel: +44 1992 76 85 15
Fax: +44 1992 71 58 03

ESAB Automation Ltd

Andover
Tel: +44 1264 33 22 33
Fax: +44 1264 33 20 74

HUNGARY

ESAB Kft
Budapest
Tel: +36 1 20 44 182
Fax: +36 1 20 44 186

ITALY

ESAB Saldatura S.p.A.
Mesero (Mi)
Tel: +39 02 97 96 81
Fax: +39 02 97 28 91 81

THE NETHERLANDS

ESAB Nederland B.V.
Utrecht
Tel: +31 30 248 59 22
Fax: +31 30 248 52 60

NORWAY

AS ESAB
Larvik
Tel: +47 33 12 10 00
Fax: +47 33 11 52 03

POLAND

ESAB Sp.z.o.o
Warszaw
Tel: +48 22 813 99 63
Fax: +48 22 813 98 81

PORTUGAL

ESAB Lda
Lisbon
Tel: +351 1 837 1527
Fax: +351 1 859 1277

SLOVAKIA

ESAB Slovakia s.r.o.
Bratislava
Tel: +421 7 44 88 24 26
Fax: +421 7 44 88 87 41

SPAIN

ESAB Ibérica S.A.
Alcobendas (Madrid)
Tel: +34 91 623 11 00
Fax: +34 91 661 51 83

SWEDEN

ESAB Sverige AB
Gothenburg
Tel: +46 31 50 95 00
Fax: +46 31 50 92 22

ESAB International AB

Gothenburg
Tel: +46 31 50 90 00
Fax: +46 31 50 93 60

SWITZERLAND

ESAB AG
Dietikon
Tel: +41 1 741 25 25
Fax: +41 1 740 30 55

North and South America

ARGENTINA

CONARCO
Buenos Aires
Tel: +54 11 4 753 4039
Fax: +54 11 4 753 6313

BRAZIL

ESAB S.A.
Contagem-MG
Tel: +55 31 3369 4333
Fax: +55 31 3369 4440

CANADA

ESAB Group Canada Inc.
Mississauga, Ontario
Tel: +1 905 670 02 20
Fax: +1 905 670 48 79

MEXICO

ESAB Mexico S.A.
Monterrey
Tel: +52 8 350 5959
Fax: +52 8 350 7554

USA

ESAB Welding & Cutting Products
Florence, SC
Tel: +1 843 669 44 11
Fax: +1 843 664 44 58

Asia/Pacific

CHINA

Shanghai ESAB A/P
Shanghai
Tel: +86 21 6539 7124
Fax: +86 21 6543 6622

INDIA

ESAB India Ltd
Calcutta
Tel: +91 33 478 45 17
Fax: +91 33 468 18 80

INDONESIA

P.T. Esabindo Pratama
Jakarta
Tel: +62 21 460 01 88
Fax: +62 21 461 29 29

MALAYSIA

ESAB (Malaysia) Snd Bhd
Selangor
Tel: +60 3 703 36 15
Fax: +60 3 703 35 52

SINGAPORE

ESAB Singapore Pte Ltd
Singapore
Tel: +65 861 43 22
Fax: +65 861 31 95

ESAB Asia/Pacific Pte Ltd

Singapore
Tel: +65 861 74 42
Fax: +65 863 08 39

SOUTH KOREA

ESAB SeAH Corporation
Kyung-Nam
Tel: +82 551 289 81 11
Fax: +82 551 289 88 63

UNITED ARAB EMIRATES

ESAB Middle East
Dubai
Tel: +971 4 338 88 29
Fax: +971 4 338 87 29

Representative offices

BULGARIA

ESAB Representative Office
Sofia
Tel/Fax: +359 2 974 42 88

EGYPT

ESAB Egypt
Dokki-Cairo
Tel: +20 2 390 96 69
Fax: +20 2 393 32 13

ROMANIA

ESAB Representative Office
Bucharest
Tel/Fax: +40 1 322 36 74

RUSSIA-CIS

ESAB Representative Office
Moscow
Tel: +7 095 937 98 20
Fax: +7 095 937 95 80

ESAB Representative Office

St Petersburg
Tel: +7 812 325 43 62
Fax: +7 812 325 66 85

Distributors

For addresses and phone numbers to our distributors in other countries, please visit our home page

www.esab.com



ESAB AB
SE-695 81 LAXÅ
SWEDEN
Phone +46 584 81 000

www.esab.com

